

Linn Log

newsletter of the Merrill W. Linn Land & Waterways Conservancy

Spring 2020



Mission of the Linn Conservancy

To preserve and protect significant ecological sites in Union, upper Northumberland, and contiguous counties and to educate the public on conservation issues critical to the health of our environment.

Board of Directors

Tali MacArthur, President
Jeff Trop, Vice President
John Ackerson, Treasurer
Owen Floody, Secretary
Warren Abrahamson
Susan Chlebowsky
Diane Donato
Roy Fontaine
Adrienne Gemberling
Kathi Hanniford.
Carol High
Wayne McDiffett
Matt Roberts
Ryan Sabo

Allen Schweinsberg, Site/Stewardship Chair
Geoff Goodenow, Coordinator
Diane Donato, Editor
Tali MacArthur, Webmaster

for your calendar

March 26 through May 10: Our Natural Heritage: Woodlands, Waterways and Wildlife The 17th annual Caring for Communities-Earth Month celebration offers family-friendly educational programs and outdoor activities focused on our local natural environment. Events are free and open to all. (See page 5.)

Friday, April 17, 2 - 9 pm: Bucknell University 8th Annual Sustainability Symposium. *Addressing Climate Change through the Arts, Research, and Community Action.* Presented by Bucknell Center for Sustainability and the Environment.

Wednesday, May 6, 5:30 pm: Conservancy banquet at Shade Mountain Vineyards/Winery

Seven Mountains Audubon Society meets the third Wednesday of the month with programs open to the public at Kelly Township Hall on Ziegler Road at 7:30 pm, through May. Seven Mountains Audubon bird walks are held on the first Saturday of the month, throughout the year. Meet at 7:30 am in front of the

former Walmart store near Panera's, Lewisburg. For details, visit www.sevenmountainsaudubon.org.

Linn Conservancy Annual Banquet Wednesday May 6 - Shade Mtn. Winery

This year we will return to the Shade Mountain Winery for our annual dinner. Join us at this delightful setting overlooking the vineyards and landscape of Snyder County. Social time, featuring Shade Mountain wines, hors d'oeuvres and raffle, will begin at 5:30 pm with formal festivities kicking off at 6:15 and dinner at 6:45 on Wednesday, May 6.

Shade Mountain Winery is located 6 miles south of Mifflinburg on Rte 104 between Penns Creek and Middleburg. The street address is 16140 PA Rte 104, Middleburg, PA.

Our caterer, The Packer House from Sunbury, will provide our appetizers and buffet including a vegetarian selection. Following dinner, Harry Campbell from the Harrisburg office of the Chesapeake Bay Foundation

Continued on page 2

"Our task must be to free ourselves by widening our circle of compassion to embrace all living creatures and the whole of nature and its beauty."

Albert Einstein

News continued from page 1

will provide us with a program titled *Save PA, Save the Bay: The Power of Partnerships*.

Please note that after holding the price at \$25 for many, many years, we have raised it to \$30 per person.

Bring a Guest: We encourage members to bring a non-member guest to introduce him/her to the Conservancy. We offer you a \$5 discount on your guest's ticket. You will find a **reservation form** inserted within your newsletter or as a separate attachment if you are receiving this newsletter electronically. Please return it with your payment before **Friday, April 24**.

Auction Item Donation: If you would like to donate an item to our banquet auction, please contact Marilyn Murphy asap to let her know what you will be donating and to arrange for pick up or delivery by **Wednesday, April 22**. Her email is mlmurphy3@gmail.com

UCCD Reports 2019 Agland Successes

By Cindy Kahley

Union County's Agland Preservation program has continued to protect our prime and statewide important soils. With the combined efforts of the Union County Commissioners, Union County Conservation District, Gregg Township, Commonwealth of Pennsylvania, and the 4 landowners listed below, we protected 498.49 acres in 2019.

The Union County Agland Preservation Board changed their regulations to offer only 85% of the appraised easement value so they could maximize the funds and increase acres purchased. We also had 2 generous donations that show the true desire of landowners to protect our agricultural lands.

The 70.13 acre Mike and Jamie Noll farm is a crop and poultry operation located in Buffalo Township. Preserving this farm resulted in a contiguous block of 1,075 acres. The Elvin and Molly Stoltzfus farm of 104.89 acres is a crop operation located in Kelly Township. Their farm adjoins land that is already preserved and will make a block of 795.41 acres.

We were also privileged enough to receive 2 donations in 2019. The first donation was located in White Deer Township. John Clemens made sure his 93.862 acre crop farm would always be protected from developments. John is the second farmer in White Deer Township to donate the development rights to their farms. The second property received as a donation was the 104 acre Mark and Matthew Dersham farm in Lewis Township. They are a crop and poultry operation but have branched out to grow 2 acres of hemp for the use of CBD oils.

As you can see, the Union County Agland Preservation program continues to grow and is within reach of their 10,000 acre goal. We are currently at 8,978.91 acres but with the continued donations and generous funding sources, we will hope to reach that goal in the next 2 years.

SCCD Hosts Faylor Lake Loop Trail Race To Benefit Youth Conservation Programs

The Snyder County Conservation District will be hosting a trail run at Faylor Lake on April 25, 2020. All proceeds will benefit the conservation district's youth education

programs such as Kindergarten Ecology days, Outdoor Ed, Snyder County Trout in the Classroom, and many more. All race participants will receive a finisher prize and t-shirt. Registration for the Faylor Lake Loop can be found online: <https://falconracetiming.com/event/faylor-lake-loop/>

Highway Cleanup Dates for 2020

As of 2018, of 313 miles of state highway in Union County, 80 miles had been adopted by 34 groups. In 2018, those groups collected 444 bags of trash.

If you would like to assist with the Conservancy's adopted highway cleanups, please contact our office to let us know of your interest.

We have adopted a two-mile section of rural roadway, one mile of which parallels Penns Creek south of Mifflinburg. Each effort takes about one hour. Our four dates for 2020 are April 4, June 6, August 1 and Oct. 3. We start at 9 am and meet at the Limestone Twp. picnic pavilion.

Directions: Take Rt 104 south from Mifflinburg and turn west (right) onto Wildwood Road (just before crossing the creek) then travel one mile to the pavilion.

Volunteer Opportunities

Would you like to help our Site/Stewardship committee as an easement monitor? It is the Conservancy's legal obligation to visit each of our easement sites annually to assure that the terms of the easements are being respected and adhered to. What would this entail?

Doing so would require just a few hours and miles on your vehicle once a year to one site. We do these in early spring before leaves come out so that sight lines are clear.

More specifically, you would have to familiarize yourself with the baseline documentation and the easement terms for the property, make a contact with the current owner to arrange a visit with or without the owners' accompaniment, and then provide a short report of your findings to the Conservancy staff. Issues, if any, that you bring to light needing further attention will be dealt with by staff. You are not expected to address any challenges -- only to report. If interested, please contact our office by phone or email.

Conserved Land Mitigates Climate Change Problems—Here's How

- **Flooding.** Climate change is causing more frequent and severe storms. Conserved forests and wetlands absorb massive amounts of stormwater, reducing destructive and life-threatening flooding.
- **Rising temperatures.** As the planet warms, conserved open spaces provide people with relief from soaring temperatures. Green spaces are cooler than developed areas, especially in cities where parks can be 5–10 degrees lower than the surrounding built environment.
- **Habitat loss.** Climate change brings habitat change, forcing many species to move to new territories or alter migratory pattern if they are to survive. Conserved land provides potential new habitat and migration routes.

(From ConservationTools.org) Help the Conservancy do more to promote sustainable stewardship of our central PA land and waterways.

President's Message

Present in the Moment

By Tali MacArthur

Despite a few very cold and windy days, such as the brief spell we are having as I write this, winter has been relatively mild. There were several jacket-free hours on the playground and on local trails (in FEBRUARY!) and no snow storms that cancelled school for hours on the local sledding slopes instead. I am not going to use this space to reflect on why this may be happening and the trends we can expect from that enormous elephant in the room—global warming (yes, I know, it is now called Climate Change, but words matter, and studies have shown people paid more attention when it was called Global Warming. Oops, I just did it—called attention to that elephant. Moving on...)

Instead I am simply going to embrace the early shoots and flowers, the robin, common grackle, red-winged black bird, and what I think may have been tundra swans migrating north that I've already been lucky enough to see. I'm going to hope that this warm weather trend is going to mean more early season hikes along local and regional trails, more perfect conditions for the sap to rise for future breakfasts with local maple syrup, and more happy "I haven't seen you since the fall" exchanges with friends and neighbors who themselves seemed to be in hibernation. Because no matter what, spring is something to celebrate. It is a time of rebirth and growth, of light shining through windows in the morning as we wake, of blooms and blossoms, of bright colors and sweet sounds. It is a time when we should reflect on how lucky we are to be exactly where we are—present, in the moment, experiencing these moments and sharing them with those we care about.

As I so often point out, we are lucky to live in a place where wildlife have places to breed and be born and grow, where farms are preserved so that we can enjoy local strawberries and other fresh spring produce, and where we can take our kids to conserved wetlands to marvel at the skunk cabbage they've recently learn to identify. So please, read this issue of the *Linn Log*, make a quick dash over to your computer or checkbook and make a donation to your Conservancy, and then GO OUTSIDE! Look around you. Listen. Breathe. Smile. Say hi to a neighbor. Welcome spring and all its glory.

USF&WS Completes 10 Year Buffalo Creek Eel/Mussel Study

By Julie Devers, USF&WS

During the summer of 2019, the U.S. Fish and Wildlife Service (Maryland Fish and Wildlife Conservation Office) and U.S. Geological Survey (Northern Appalachian Research Laboratory), completed year 10 freshwater mussel and fish community surveys in Buffalo Creek and Pine Creek. In addition, we conducted targeted eel surveys to assess growth and distribution of eels.



An American eel recovered from Buffalo Creek

These surveys conclude a 10 year project in which we were assessing the effects of reintroducing American eels on fish communities and the recruitment of the freshwater mussel, Eastern Elliptio.

American Eels act as a host for the larval stage of Eastern Elliptio. The

mussel larvae attach to fish's gills while they undergo a metamorphosis to the juvenile life stage. Eastern Elliptio larvae likely attach to other fish species in smaller numbers but studies have shown that American Eel are a very successful host.

The results of the mussel surveys indicate that the population of Eastern Elliptio in Buffalo Creek has remained steady over the course of the project. The

number of juveniles (less than 30 mm) found at the survey site, near the swinging bridge on Hoffa Mill Rd, increased from 2 to 5 found from 2010 to 2014 and remained steady with 6 juveniles found in 2019.

There was however an increase in the number of Eastern Elliptio less than 60 mm from 40 individuals to 60 individuals found. In contrast, there was a large increase in the number of juvenile and smaller Eastern Elliptio in Pine Creek. Eel lengths continue to increase both at the stocking sites and at upstream sites in Buffalo Creek.

However, both fish community surveys and targeted eel surveys indicate that American eels declined in the number of eels captured per unit effort from 2014 to 2019. The decline in abundance indicates that the male eels may have started their migration downstream toward their spawning grounds in the Sargasso Sea in the Atlantic Ocean.

Over the winter we will be analyzing the fish community data to determine how the fish community changed over time with the reintroduction of American eels.



Julie Devers (far right) at a Buffalo Creek eel shocking event

Winter Solstice Celebrated At Dale's Ridge Trail

A winter solstice and lantern walk held on December 20 was considered a success by the 75-80 people in attendance. Prior to this main event, we held a lantern-making event at the Donald Heiter Center on December 15, and we worked with the art teacher at Kelly Elementary so that all 2nd grade students made a luminary for our lantern walk. The children's artwork on the luminaries was a special touch that made the event feel even more special.



Kelly Elementary students created luminaries for the Solstice event.



Lewisburg High School students worked with children at the Heiter Center to create a variety of colorful lanterns.

The clear, crisp night was perfect for the event which featured campfires, hot drinks, s'mores, music, readings and, of course, a lantern walk along a portion of the Dale's Ridge Trail. Special thanks to Linn board member Susan Chlebowski who took the lead in bringing this first-time event to members and friends of the Conservancy.

A few comments from participants about the Solstice event:

"I loved the simple, memorable beauty of walking in the dark on a path that's familiar to me only in daylight, a handmade lantern in hand, family trailing along beside me. I loved gathering around the campfire to learn from you (Susan) the words of a poem by Wendell Berry, 'To Know the Dark.' I loved reflecting on what it is to be in darkness and in light with others. In its attunement to nature and to community and its offering of quiet or song or talk, as a person felt drawn to, it felt like a



Volunteers arrived early to place luminaries along portions of the trail providing light for the evening Solstice walk.

deeper, richer, more memorable group event than any other I've attended this year. I'm so grateful for it."

"I liked that lanterns lit the path you walk on so you can see the path clearly even at night."

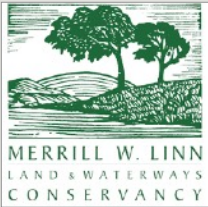
"It feels like what December IS instead of what capitalism tries to make it (and succeeds in making it, for those of us who live in this culture)."

"It was such a warm and welcoming event, the perfect way to celebrate the longest night and ring in the holiday season..."

"All three generations of our family had a lovely time at the starry solstice walk. The meander on the crisp evening was beautiful, guided by our lanterns and so many luminaries! We loved the three fires, complete with singing and hot chocolate! A new tradition!"



Fires helped warm the Winter Solstice participants who drank hot chocolate, ate s'mores and toasted marshmallows after their Solstice walk.



Merrill Linn Conservancy

Caring for Communities Celebrates Our Natural Heritage: Woodlands, Waterways and Wildlife

What is Caring for Communities? Family oriented, mostly free events designed to provide learning opportunities and raise awareness of the natural resources and beauty of our central Pennsylvania home.

The Conservancy will kick off its 17th annual Caring for Communities programming in late March. While still offering a variety of events in recognition of Earth Day/Month, in a change from previous years, we are reducing the number concentrated in that time frame and spreading events throughout the year.

In doing so, we hope to take advantage of better weather, seasonal opportunities, and to engage more people in those events. So here's the line up so far, but keep checking local news media, our website and Facebook pages for additions and changes to the calendar.

Thursday, March 26, 7:10 and 7:40 am

Newsradio 1070 WKOK AM with Mark Lawrence and Linn Conservancy members discussing the Conservancy's recent accomplishments, our lineup of Caring for Communities events, and more activities planned throughout 2020.

Sunday, March 29, 9 am-12 pm

Live Stakes Planting Event at Koons Trail property, cosponsored by Merrill Linn Conservancy and Union



Volunteers installing live stakes at a Chesapeake Conservancy event.

County Conservation District and led by the Chesapeake Conservancy's Adrienne Gemberling. Live stakes are living shrub and tree branches that root readily when inserted into the soil. Participants will install branch cuttings to restore forest cover at the site, which borders Buffalo Creek. Growing trees on stream banks minimizes

loss of land, provides critical food for stream wildlife, and filters upslope runoff. A tour of the Koons site is also planned. Participants are urged to wear boots or

other waterproof footwear. Park at 497 N. 4th Street, Mifflinburg.

Thursday, April 2, 7 pm

BCWA presentation/annual meeting at Union County Govt. Center. Ben Hayes, director of the Watershed Sciences and Engineering Program at Bucknell University, will speak on *Improving Stream Health and Resilience*. Address: 155 N. 15th Street, Lewisburg.



Saturday, April 4, 1 pm

Live the Stream Award-winning documentary film at Campus Theatre. *Live the Stream* is the inspiring life story of Pennsylvania's fly fishing legend, Joe Humphreys, who was born to fly fish, lives to teach, and strives to pass on a respect for our local waters. This screening is free.

Saturday, April 11, 1 pm

Baywings Raptor Demonstration at Noll-Spangler National Historic Farm The Noll-Spangler farm, which dates back to 1802, will be the setting for a spectacular display of Baywings Falconry's stable of hawks, owls, and falcons presented by falconry expert and environmentalist Cheri Heimbach. Address: 1175 Wildwood Road, Mifflinburg. From Mifflinburg take Route 104 toward Middleburg for approximately 4 miles. Turn left on Wildwood Road (just before the bridge into Snyder County). The farm is on the right; look for sign.



A Baywings Falconry owl

Continued on page 6

Friday, April 17, 9 am-3 pm

Stream Buffer Planting at Susquehanna University
hosted by Adrienne Gemberling, Chesapeake Conservancy. A luncheon, featuring foods that will be grown in the new buffer area, will be provided to volunteers. Address: Freshwater Research Institute, 1250 West Sassafras Street, Selinsgrove.

Saturday, April 18, 8:30 am-12 pm

Breakfast in the Park/Dedication/Spring Tree Planting/Cleanup Meet at Lewisburg Landing (St. George Street Boat Ramp) Sponsored by Lewisburg Neighborhoods For more information, call 570-523-0114 or email elmstreet@dejazzd.com.

Friday, April 24

Arbor Day Celebration with Lewisburg Shade Tree Commission Details TBD

Sunday, April 26, 9 am-5 pm
17th Annual Plein Air Day



By David McSween

The Plein Air Event provides an opportunity for artists of all ages and abilities to gather at the Dale-Engle-Walker property (Dale's Ridge Trail) and

the Koons Trail property in Mifflinburg to create artwork that captures the beauty of these sites, which are protected through conservation easements held by the Merrill Linn Conservancy.

Local artist David McSween will present an optional plein air workshop at the DEW House at 9 am. The workshop is free, but space is limited. Email workshops@lewisburgartscouncil.com for workshop registration.

A reception, which is open to all, will be held on the lawn outside the house from 4 pm to 5 pm. The DEW property is located at 1471 Strawbridge Road, 1.4 miles north of Route 192 west of Lewisburg. The Koons Trail property is on North 4th Street in Mifflinburg at the Hassenplug Covered Bridge.

Artwork created during the Plein Air Event will be shown at The Public Library for Union County at the 255 Gallery during the month of June. An opening reception will be held in the large meeting room on Thursday, June 4, from 5 to 7 pm.

Sunday, April 26, 1 pm

Children's PopUp Art Event

In conjunction with Plein Air Day, a children's pop-up art event sponsored by the Lewisburg Arts Council and the Merrill Linn Conservancy, will be held at Hufnagle Park beginning at 1 pm. Children will have the opportunity to create their own artwork using found objects provided for them.

Wednesday, May 6, 5:30 pm.

Merrill Linn

Conservancy annual banquet at Shade

Mountain Winery. Our caterer, The Packer House from Sunbury, will provide our appetizers and buffet including a vegetarian selection. The formal program begins at 6:15 with dinner at 6:45.

Following dinner, Harry Campbell from the Chesapeake Bay Foundation's Harrisburg office will deliver the keynote address—*Save PA, Save the Bay: The Power of Partnerships*.

Shade Mountain Vineyard/Winery is located 6 miles south of Mifflinburg on Rte 104 between Penns Creek and Middleburg. The street address is 16140 PA Rte 104, Middleburg, PA.

Sunday, May 10, 1-5 pm

River Road Holiday Walk It! Bike It! on River Road north of Lewisburg on Mother's Day. River Road will be officially closed to traffic from Water Street up to Winter Farm Lane, just before the main entrance to RiverWoods. Bikers, runners, skaters, pedestrians, and people with wheelchairs are all welcome. Rain date is Sunday, May 17.

Sponsored by Lewisburg Neighborhoods. Call 570-523-0114 or email elmstreet@dejazzd.com for details.



Sponsored by Marilyn Brill & Susan Warner-Mills, Bucknell Center for Sustainability and the Environment, Cole's Hardware, Diane Donato, Lewisburg Studio, Wayne McDiffett, Meixell-Diehl Insurance, Mifflinburg Bank & Trust, Molesevich Environmental, Mondragon Bookstore, Reptiland, Service First Federal Credit Union, Susquehanna Community Bank, *Susquehanna Life Magazine* and Trout Unlimited-RB Winter Chapter

For complete information, call 570-524-8666
or visit www.linnconservancy.org/aboutus/caring-for-communities/

Plein Air Event Connects Artists to Nature

Artists of all ages and skill levels are welcome to participate in the seventh annual Plein Air Event on Sunday, April 26, from 9 am to 5 pm, and to display the work they create at The Public Library for Union County during the month of June. The event provides artists an opportunity to interact with each other while working *en plein air*—in the outdoors, rather than in a studio—at a time of year when nature is most alive. The popular event is sponsored by the Merrill Linn Conservancy, the Lewisburg Arts Council, the Artists' Guild of Lewisburg, and the Union County Historical Society.

Two popular sites protected by conservation easements with the Merrill Linn Conservancy—the Dale-Engle-Walker (DEW) property at 1471 Strawbridge Road off Route 192 and the Koons Trail property on N. 4th Street in Mifflinburg—will be open to artists from 9 am to 5 pm on April 26. Volunteers will be posted at both sites to assist artists and transportation between the two sites will be available.

During the week of April 27 through May 3, artists are invited to return to the DEW and Koons properties to complete their work. During that week they may also paint at the Shamokin Mountain Trail, located near Forest House Lane off Stein Lane, and at the scenic Shikellamy State Park. All work done at these four sites through May 3 is eligible to be shown in the plein air exhibition at the library. Detailed descriptions and

directions for each site, along with guidelines for artists and general information about the Plein Air Event are available online at the Merrill Linn Conservancy website, www.linnconservancy.org, and the Lewisburg Arts Council website, www.lewisburgartscouncil.com.

The annual Plein Air Workshop, to be held at the Dale-Engle-Walker House from 9 am to 11 am, will be conducted by local artist David McSween, who will discuss subjects important to successfully painting *en plein air*. Following the indoor presentation, participants will move outdoors where Mr. McSween will paint while describing the steps he is taking. The workshop is free; space, however, is limited. **To attend the workshop, email workshops@lewisburgartscouncil.com** A reception will be held at the DEW house from 4 pm to 5 pm. Artists are encouraged to bring their artwork to the reception to share with others and to meet the Plein Air Event volunteers who have worked to make the day possible. The public is welcome to attend the reception and view the artists' work. Each artist will receive an event packet with guidelines for displaying their work in the Plein Air exhibit at The Public Library for Union County. On Thursday, June 4, from 5 pm to 7 pm, a reception honoring the artists and their work will be held in the library's Gallery 255 and in the large meeting room adjacent to the gallery.

David McSween Will Present Plein Air Workshop

Artist David McSween, a Lewisburg resident with roots in North Carolina, will present the annual Plein Air Workshop at the Dale-Engle-Walker House on Sunday, April 26 at 9 am. While the workshop is optional for Plein Air participants, it is a very popular feature of the day, attracting a standing-room-only audience eager to learn how a fellow artist approaches painting *en plein air*.

McSween who loves “sharing what works for me” will talk about the importance of well thought out and realized



Undeterred by rain, McSween painted DEW House at the 2019 Plein Air Event.

composition and developing a palette that works efficiently for the artist. He encourages artists to find their voices and make their art uniquely theirs. An artist must ask, McSween says, “What story is being told in a painting?” That story will inform

the composition as illustrated in McSween's painting of the Dale-Engle-Walker House from last year's Plein Air Event, in which he positions the DEW House heroically on the hilltop that rises from the property's front lawn.

McSween's philosophy of painting and drawing is well suited to the demands of plein air. His concern as an

artist is to “be present in the moment.” In his current work he aims for a sense of immediacy, freshness, and a raw, unfinished look that draws the viewer into his process as an artist. “How much is enough?” is the question McSween asks in all his work.

McSween began developing his art skills as a middle school student. “I wanted to learn how to draw,” he says. With the encouragement of his father who sketched and drew cartoon characters, McSween applied and was accepted at Northwest School of the Arts, one of Charlotte, NC's outstanding magnet schools. From his first days at Northwest, McSween knew he was in the right place. He continued his studies at Maryland Institute College of Art, attracted by the school's strong fine arts program. He later studied under celebrated modern-day masters Max Ginsburg and Jordan Sokol.

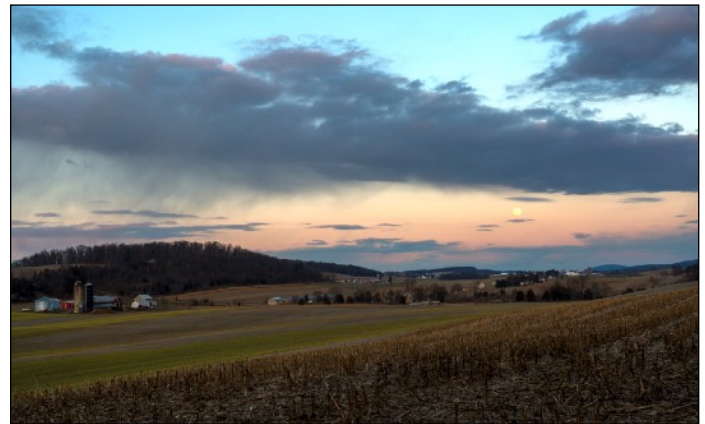
Today McSween's work includes still-lives, portraiture, and figure painting—his favorite genre, as well as landscapes. He seeks out opportunities to paint and learn. Last year he traveled to New York City to take part in an oil painting competition at the historic Salmagundi Club. Closer to home he can often be found at The Arts Underground participating in such programs as the Open Portrait Studio. McSween sells both originals and prints of



Photo by Brett Simpson

Thom Rippon Hosts Memorable Outing at One Barn Farm

Thom Rippon, owner of One Barn Farm, hosted more than 45 Conservancy friends and members at the 90-acre White Springs property in early February. The late afternoon outing had originally been planned as a cross-country ski and snowshoe event, but lack of snow called for a change of activity. Rippon, a PA Master Naturalist, led a walk through the property's wetlands, woodlands and meadows sharing his knowledge of the natural and human history of the site. A snow moon rose in the sky as the walk ended. Hikers returned to Rippon's 18th Century home to enjoy a stunning buffet. Our thanks to Thom for a memorable event.



Photos by Owen Floody

Regenerative Agriculture: An Approach To Lessening Climate Change

Adapted from article by Heather Hansman in Outside Magazine 12/31/2019

The agriculture sector is responsible for about a quarter of global greenhouse emissions. Ag creates food and fiber and jobs. And when it's done right, it can act as a carbon sink. Healthy soil, with intact root systems, can hold huge amounts of carbon. According to the International Panel on Climate Change, agriculture is unique in its ability to both reduce emissions, through sustainable farming practices, and capture them, through carbon sequestration.

That's where regenerative agriculture comes in. There are 7.5 billion living organisms in a teaspoon of soil—more than there are people living on earth—and regenerative ag supports those organisms, helping them hold nutrients, fighting erosion, and negating the need for chemicals. Estimates from Ohio State's Carbon Management and Sequestration Center say carbon sequestration through regenerative practices could offset fossil fuel emission by up to 15 percent. Loftier assumptions from the United Nations say it could offset total global emissions by 10 percent.

The term regenerative agriculture was coined in the 1980s at the Rodale Institute, the Pennsylvania-based organic farming think tank founded by J.J. Rodale. In practice, it means that farmers rotate and diversify crops and animals, don't poison lands and water, and minimize tilling and soil disruption. Over time, those practices have been shown to make land more resilient and more productive—and able to hold more carbon and water.

The Regenerative Organic Alliance (ROA), a nonprofit coalition of organic companies like Dr. Bronner's, Patagonia, and Horizon Organic, has built a certification for regenerative producers around three connected pillars: soil health, animal welfare, and social fairness. This ROA certification encompasses not just organic practices, but also long-term soil health and economic benefits for farmers.

Conservation district Agland Preservation programs in our area, along with the Linn Conservancy, protect thousands of acres of farmland. Not only is the food producing capacity, open space and beauty of central PA preserved, but as we learn here, following certain farm management protocols can also help reduce the extent of climate change.

thank you!

New Members: Bob and Chris Shabanowitz, Kathleen Fornataro, Lewisburg; Scherry Moore, Selinsgrove; Deborah Billas, Coal Township

Thank you to:

Donations from: Michael Gross, Joyce Bowers

To those who supported us through Raise the Region
Thom Rippon for hosting our February event at his One Barn Farm property

Benjamin Brillat for requesting a matching donation to MLC from his employer

Judy Ellis for documenting 2019 in-kind donations to Linn Conservancy

CFC funders: RB Winter Chapter - Trout Unlimited, Moleseich Environmental, Bucknell Center for Sustainability and the Environment, Marilyn Brill & Susan Warner-Mills, Diane Donato, Cole's Hardware, Meixell-Diehl Insurance, Susquehanna Community Bank, Reptiland, Lewisburg Studio, *Susquehanna Life Magazine*, Mondragon Bookstore, Service First Federal Credit Union, Mifflinburg Bank & Trust, Wayne McDuffett

To recent endowment fund donors: Nancy Macky, John Tonzetich

Solstice event contributors: Cole's Hardware,

Diane Donato, Tali MacArthur, Jeff Trop, Geoff Goodenow, Matt Roberts, Owen Floody, Ryan and Samantha Sabo, Kara O'Rourke and Susan Chlebowski, coordinator of the event

Thanks to all who renewed memberships for 2020. If you have not done so, use the form below or use our link to Paypal at <https://linnconservancy.org/support-us/donate/>

Business Partners for 2020

Thank you to those business owners who have joined our Business Partner program for 2020. Your membership renewal letter contained your 2020 partner card indicating participating businesses for the current year and the discount they offer to you. Please patronize them as we hope that both they and our members benefit by this relationship.

Bertoni's Pizza, Montandon; **Lewisburg Studio**, Vargo Outdoors, Mondragon Books, Lewisburg; **Brookside Bikes**, Mifflinburg; **Ian Adrian Nature Photography**, iannaturephotography.com

MEMBERSHIP FORM

Detach and mail to Linn Conservancy, PO Box 501, Lewisburg, PA 17837

YES! I / we want to support the Linn Conservancy this year as a: Sponsor \$500_____

Supporter \$250 _____ Friend \$100 _____ Contributor \$50 _____ Other _____

This is a contribution from _____ Individual _____ Family _____ Business _____

_____ New membership _____ Renewal

I am also adding \$_____ to support the Buffalo Creek Watershed Alliance (BCWA)

Name(s) _____

Address _____

City _____ State _____ Zip _____

Home phone _____ Business phone _____

E-mail _____

TOTAL AMOUNT ENCLOSED \$ _____

(Or pay via PayPal through our website—www.linnconservancy.org)

If you are interested in making a separate contribution to the Linn Conservancy Endowment Fund, email linn@ptd.net or call 570-524-8666.

The Merrill W. Linn
Land & Waterways Conservancy
PO Box 501
Lewisburg, PA 17837

Non Profit
U.S. Postage
PAID
Lewisburg, PA
Permit No. 64

RETURN SERVICE REQUESTED



www.linnconservancy.org
(570) 524-8666
linn@ptd.net

Spring 2020

In this issue:

- Caring for Communities: Our Natural Heritage: Woodlands, Waterways and Wildlife
- Screening of *Live the Stream* at Campus Theatre - April 4
- 7th Annual Plein Air Event - April 26
- Linn Conservancy Annual Banquet - May 6

The Linn Conservancy is a member of...



like us on Facebook! Our Facebook page is a great resource for conservation news, stories and photos.