

Linn Log



MERRILL W. LINN
LAND & WATERWAYS
CONSERVANCY

PO Box 501, Lewisburg, PA 17837
linn@ptd.net (570) 524-8666
www.linnconservancy.org

The Newsletter of the Merrill W. Linn Land & Waterways Conservancy

Board of Directors

Wayne McDiffett, *President*
John Snook, *Vice President*
Judith Ellis, *Treasurer*
Diane Donato, *Secretary*
Owen Anderson
Patricia Arduini
Sue Auman
Chris Bergesen-Peeling
Don Bowman
Deb Brubaker
Roy Fontaine
Tom Gibson
Carl Oberheim
John Tonzetich
Susan Warner-Mills

Allen Schweinsberg, *Site/Stewardship Chair*
Edwena Eger, *BCWA Bookkeeper*
Geoff Goodenow, *Coordinator*
Ruth Bradford Burnham, *Editor and webmaster*

Mission of the Linn Conservancy

To preserve land and waterways in Union, Snyder, upper Northumberland and contiguous counties for scientific, historic, educational, ecological, recreational, agricultural, scenic, or open space opportunities.

Winter 2011 - 2012

For your calendar:

All events open to the general public. Specific details (locations, times) about some of these events appear within the newsletter or at associated websites noted within.

Linn Conservancy www.linnconservancy.org

- **January through April:** Photo contest
- **January 14:** Snowshoe/Cross-country ski at Dale's Ridge; 1 p.m. (register by Jan. 11)
- **April:** Caring for Communities events – watch for specific dates and activities in the next issue of the *Linn Log* and on our website in mid-March
- **May 2:** Annual Dinner (details and reservation form will be in the next newsletter)

"Now I see the secret of making the best person. It is to grow in the open air and to eat and sleep with the earth." Walt Whitman

Events and Activities

Snowshoe and Cross-Country Ski at Dale/Engle/Walker

The Linn Conservancy is offering a winter afternoon of snowshoeing and cross-country skiing at the Dale/Engle/Walker property on Saturday, January 14, beginning at 1 p.m. Snowshoes will be provided courtesy of R.B. Winter State Park's Environmental Education Center. Skiers must bring their own equipment.

Pat Arduini, chair of the education committee, which is organizing the event, says we will have a fire, hot chocolate and possibly cookies to wrap up the afternoon, giving folks an opportunity to socialize with Linn Conservancy and Buffalo Creek Watershed Alliance (BCWA) board members.

Meet in the parking lot adjacent to the Dale/Engle/Walker house for the approximately two-hour outing. The event is suitable for beginners and a brief lesson will be offered for those interested. The ski/snowshoe afternoon is free, but we do ask that participants **register by Wednesday, January 11** by calling 524-8666 or emailing linn@ptd.net with "xc ski" in the subject line.

Cross-country skis available

Conservancy member Magdalena Pieters has donated a set of cross-country skis with bindings and poles to our organization. While avid about skiing herself, she is unable to use the skis and offered them to us. Here is a description of the equipment: Solomon SNS bindings are mounted to Norwegian (Normark VI) wooden skis (yes, these have to be waxed); 195cm; very good to excellent condition; bamboo poles. If interested please email linn@ptd.net or call the office at 524-8666.

2012 "A Green & Playful World" Youth Nature Photo Contest

"If children are in the outdoors often enough to watch and experience their ecological surroundings, they will be far more likely to care about the wellbeing of their natural environment over time, more likely to make informed decisions, and more likely to be conscientious in their actions."



The Linn Conservancy education committee is planning its second annual Youth Nature Photo Contest during the months of January through April 2012. Themed as "***A Green & Playful World***," the contest is designed to give children a way in which to showcase people and their relationships with local wild places and working landscapes. The contest will feature images that reflect people engaged in outdoor activities in natural settings.

Participation will be free and open to amateur photographers from Union, Snyder, and Northumberland counties, who are between the ages 6 to 18 years old as of the contest period. **Visit the Linn Conservancy's website beginning January 2012 for full details, contest rules, and forms.**



Caring for Communities Coming in April

Chairperson Tom Gibson has been at work with his committee building a schedule of events and activities for our annual Caring for Communities series. This year we will kick off the series the last weekend in March with a couple of films at the Campus Theatre in Lewisburg. While we are still in the process of film selection, we plan to have one that will be entertaining yet educational for children and one more geared for an adult audience. A complete schedule of activities will be posted on our website and included in your spring edition of the *Linn Log* to be out in late March.



News and Notes

New Fence at Dale's Ridge Trailhead

Zach Bohartz (right, with new fence), a Lewisburg High School senior and a member of Lewisburg Scout Troop 538, chose to do several projects to benefit the Merrill Linn Conservancy and users of the Dale's Ridge Trail.

The most obvious part of this effort was replacement of the fence at the trailhead parking area. The split rail design is very fitting for the site. In addition, Zach replaced or repaired 3 bluebird boxes and repaired one of the steps on the switchback section of the trail. Zach raised over \$600 in donations toward materials and recruited fellow scouts to help perform the labor. He estimates that he put 175 hours into the project. Having completed these projects by mid-September, Zach earned the rank of Eagle Scout.

The Conservancy is very pleased with Zach's work. We thank him, and his troop leaders and fellow scouts for supporting him in this project.



August Adopt-a-Highway Project a Success

First-year Bucknell students assisted (right) with the Conservancy's adopt-a-highway clean-up along Penns Creek on August 27.



Easement Property at Work

Bucknell biology professor Misuki Takahashi brought members of his amphibian biology class (left) to the easement-protected property of David and Pauline Fletcher in Kelly Township, Union County to search for specimens. Takahashi stated that it was a cold morning and they didn't find many species, but they did find red back salamanders, northern dusky salamanders, northern spring salamanders, bullfrogs, and eastern newts.



Ever-Helpful Bucknell Students Assist at D/E/W Cleanup

One of the benefits of being part of a college community is the ready supply of students who enjoy getting outdoors and/or who value community service. A great group of students (right) helped with the fall cleanup at the Dale/Engle/Walker property.

Commentary

Making Use of Our Great Outdoors, Joe Southerton on “Getting Basic”

“Back to the Basics” is a term that often pops up in educational pedagogy. At the Mifflinburg Middle School the students and teachers ARE getting “Back to Basics.” But in Mifflinburg, it is not the “basics” that one would usually think of when we hear that old cliché; it’s not the “addition-subtraction-multiplication” basic. No, in Mifflinburg, students and teachers are really getting basic. How basic? How about, “take a walk in the woods” basic?

As part of a new direction in the traditional intra-mural program, an initiative was suggested that would expand the program's scope and purpose, so as to involve a more diverse student population. The initiative’s multi-faceted purpose is:

*To expose students to the myriad of hiking trails that exist in Central Pennsylvania that they could take advantage of in the future.

*To connect students and teachers in ways that are difficult in the traditional school setting.

*To promote an interest-based peer group that abounds with “positive energy.”

*To facilitate good exercise.

*To provide a unique outdoor activity for many children who, because of a number of possible situations, would not otherwise be exposed to such an opportunity.

*To provide a wholesome after-school activity for those who, for whatever reason, are not so inclined to participate in other extracurricular events.

*To discover the simple joy and positive energy of a hike in the woods, and how, in being under the trees, one can find nourishment for the soul.

In a nutshell it is an “Anti-bullying, student-teacher conference, physical education, spiritual encounter, get-out-to-hike-and-feel-good program.”

In this trial year of the activity, four hikes had been planned: two in the fall, Dale’s Ridge Trail and R. B. Winter Park, and two in the spring, the Hook Natural Area and perhaps a few miles on the Appalachian Trail. Initially, it was hoped that a dozen or so students would participate. To the delight of the participating Mifflinburg staff, 54 students signed up for the Dale’s Ridge hike. The air at Dale’s Ridge on that day was filled with such a spirit of adventure that it was obvious that the program was an instant success!

Hayley Beck, an 8th grade student at the Mifflinburg Middle School was one of the participants in Joe’s fall hike on Dale’s Ridge. Hayley provided the following summary of her experience that day:

I went on a hike to Dale’s Ridge with my school and it was amazing! I loved the view from the top and the climb up the mountain. The switchback was a bit of a challenge, but it wasn’t as hard as I had pictured it to be. I think the best time to go would definitely be in the beginning of the fall, which is when I went. The air is starting to get colder, yet is still warm. Leaves are colorful, making the scenery beautiful. The hike was a chance to get some physical exercise, catch up and hang out with friends, and most importantly, to have lots of fun! I would suggest this trail to anyone; it was one that is somewhat easy, but could be a challenge for some people. A wonderful part about the hike is that it’s open to the public right by the Dale/Engle/Walker house, so for anyone that goes, you get two awesome experiences in one trip! The trail is also cleared, so you know exactly which way you are supposed to go, making it a lot easier. My absolute favorite part of the hike was being able to catch up with some of the friends I don’t see a lot due to school and other activities we’re involved in. The hike to Dale’s Ridge was one of the best trails I have ever been on, and I can’t wait to go on it again, maybe this time with my family!



Like-Minded Organizations

Buffalo Creek Watershed Alliance of the Merrill W. Linn Land & Waterways Conservancy (BCWA)
www.buffalocreek.org meets on the first Thursday of each month at 7 p.m. at the Union County Government Center, North Fifteenth Street, Lewisburg

Lower Penns Creek Watershed Association www.pennscreekwatershed.org

- Meets third Thursday monthly; 7 p.m.; Adult Resource Center, 100 Richard Road, Penns Creek

Organizations United for the Environment (O.U.E.) www.ouenews.org

- First Monday of every month 7 p.m., at Mondragon Bookstore, 111 Market St, Lewisburg.

Seven Mountains Audubon Society www.sevenmountainsaudubon.org

- Programs are held on the third Wednesday of the month at the Kelly Township Municipal Building at 7:30 p.m. Free and open to everyone. Take Rte. 15 North of Lewisburg to Zeigler Road (first light north of the Sheetz store). Turn left (west). The building will be on your left within about ¼ mile. Audubon programs for January, February and March 2012, respectively, are “Atacama” with **Craig Kochel**; “South America’s Pantanal” with **Owen Floody** and **Andrea Halpern**; and “Barn Owls” with **Mario Giazon**.
- Audubon’s first Saturday (of each month) outings: Meet in the parking area on the south side of the CVS Pharmacy near the northwest corner of Rtes. 15 and 192 in Lewisburg at 7:30 a.m. Destinations TBA.

Sierra Club (Otzinachson Chapter) www.pennsylvania.sierraclub.org/otzinachson

- Meets first Wed every other month at Mondragon Bookstore, 111 Market St, Lewisburg



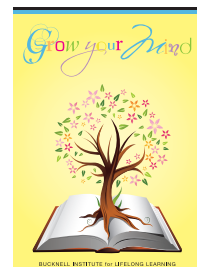
Snowfest at R. B. Winter State Park, February 12, 2012, noon to 4 p.m.

Get out and enjoy a season which too many dread. The annual SNOWFEST at R. B. Winter State Park (18 miles west of Lewisburg on Rte 192) provides an opportunity for all to break out of the winter doldrums and experience some adventures and activities unique to the season. **Try** out one or more of the following: a hike on snow shoes, cross country skiing (equipment rental fee), ice skating (fee for rentals), horse drawn wagon rides (fee for ride), snow volleyball, broomball. **Come to see** ice rescue demonstrations, ice fishing skill demos, snow mobile safety and rides for kids, winter camping equipment and techniques, an ice sculpture demonstration, winter search and rescue using dogs. **Enjoy** a food concession and participate in a silent auction to benefit future Snowfests and other park events. Special activities for children including winter story time, nature activities and crafts will also be provided. And if all of this is not enough (or too much), just come out to enjoy the beauty of Penns woods under a blanket of snow -- we hope.

For more information about Snowfest and other park activities throughout the winter, go to rbwintersp@state.pa.us



Bucknell Institute for Lifelong Learning (BILL): The spring term of classes begins February 27. Several Conservancy members have led short courses and many more members have participated by taking classes. All courses are offered during the day at convenient Lewisburg locations. Check out www.bucknell.edu/lifelonglearning or phone 570-577-7006 for more information on courses, membership, and registration.



Watershed & Land Protection

The Buffalo Creek Watershed Alliance (BCWA) of the Merrill Linn Land and Waterways Conservancy, by Susan Waggoner



BCWA was formed in 2002 as a subsidiary of the Merrill W. Linn Land & Waterways Conservancy. Here is an update on activities within that group.

Strategic Planning

The BCWA board is working with **Jinnie Woodward** of ALLARM (Alliance for Resource Monitoring) of Dickinson College to assess its function as an organization and to strengthen it for the future through the strategic planning process. ALLARM provides services to resource monitoring organizations for training volunteers in monitoring techniques, interpreting the data collected, and communicating that data to the wider public. So far, Ms. Woodward has attended several board meetings and offered some expert advice on BCWA activities. Eventually, she will make recommendations that will help the board carry out its many activities in the most efficient manner.

Progress on Acid Remediation

The acid remediation site in Bald Eagle State Forest is BCWA's crowning achievement. The treatment ponds, completed in August 2009, continue to function well, bringing the acid levels back to within a normal range. Recent measurements indicate that the stream headwaters are now conducive to life. Volunteer water testers have noted large populations of frogs, tadpoles and dragonflies as well as increased populations of other stream insects. A thorough macro invertebrate study of the first ten miles of the creek by Bucknell biology staff and students is planned for the spring.

Restoring a Wetland

With the filling in of wetlands in Union County over the years, the land has lost its ability to absorb rainfall and support wildlife. A cooperative project is underway to restore a two-acre wetland on Ard's Farm in the Limestone Run watershed. BCWA, Bucknell University, and the Union County Conservation District have teamed with Ard's Farm and the U.S. Department of Agriculture and the Foundation for Pennsylvania Watersheds to begin the restoration of this wetland. Surveying is now taking place and full construction is scheduled for the spring.

Study of Impermeable Surfaces

BCWA and students from Bucknell University are studying impermeable surfaces in Union County with the help of the county GIS staff. Hard surfaces that do not absorb rainfall, such as parking lots, streets, and large roofs, contribute to heavy runoffs and floods by sending water more quickly to the main stream. Calculating the percentage of these hard surfaces and encouraging the use of permeable surfaces in new construction is the goal of this study. **Tim Yurish**, a freshman engineering student from Bucknell, completed fifteen hours of community service work on this project and presented a preliminary report to the BCWA board at its December meeting.

More information on these and the many other projects of BCWA can be found in the current issue of the BCWA newsletter and at the website - www.buffalocreek.org.



On the National Front (from Land Trust Alliance)

The Merrill W. Linn Land & Waterways Conservancy is a member of the Land Trust Alliance (LTA), a national organization of land trusts. The two reports that follow are taken from a report produced as a result of a recent census conducted by LTA.

The Land Trust Alliance has reported on the status and successes of land trusts since its founding in 1982. The National Land Trust Census measures the pace and quality of the important conservation work of local, state and national land trusts in the United States.

Saving land has given America the chance to know itself again. When we look into the mirror of our national identity, we can now see farms, urban gardens, historic sites, mountains and rivers—not just strip malls, bulldozers and traffic jams. Through land conservation, we give people the opportunity to taste something of what it is like to be authentically human: children rolling in the grass of an urban park; a grandfather teaching his granddaughter the quiet art of fishing; a fifth-generation farmer growing vegetables on his family's homestead—nourishing his community with both fresh food and a farm stand where neighbors gather. We set out to save land, but, in the end, we build community, preserve beauty and instill hope.

Key Findings of the 2010 National Land Census

- **Total acres conserved by state, local and national land trusts grew to 47 million** as of year-end 2010—an increase of about 10 million acres since 2005 and 23 million since 2000.
- **The number of active land trusts has leveled off** at 1,723 organizations since the last Census. This includes 1,699 state and local groups and 24 organizations categorized as national land trusts. California has the most land trusts with 197, followed by Massachusetts (159), Connecticut (137), Pennsylvania (103) and New York (97).
- **The number of active land trust volunteers increased by 70%** since 2005, while the number of paid staff and contractors increased by 19%.
- From 2005 to 2010, state and local land trusts **more than doubled the amount of funding they have dedicated to monitoring, stewardship and legal defense**. They also nearly tripled their operating endowments.

And on the Pennsylvania Front (also from LTA)

As indicated above, the Land Trust Alliance shows that land conservation by nonprofit land trusts across the United States is thriving, with more than an additional 10 million acres conserved from 2005 to 2010. The points below show the contributions made by Pa. land trusts to this success. Here are the Pennsylvania's Trends in Conservation from 2005–2010 as reported by LTA:

- Land trusts in Pennsylvania have protected 502,243 acres. This represents an 18% increase in acres conserved since 2005. Pennsylvania ranks 11th in the nation in acres conserved and 4th in the Northeast (behind Maine, New York and Vermont).
- There are now 103 land trusts operating in Pennsylvania, including 56 staffed groups and 27 all-volunteer groups.
- Pennsylvania land trusts increased their full- and part-time staff and contractors 14% in 5 years, for a total of 587 paid positions in 2010.
- Land trusts in Pennsylvania drew upon the work of 18,647 active volunteers (an increase of 107% since 2005) and the contributions of 48,101 members and financial supporters.

And for our part in all of this, the Merrill Linn Conservancy added three protective conservation easements in 2010 totaling nearly 200 acres. Volunteers put in hundreds of hours as board and/or committee members, trail stewards, envelope-stuffers, staffing informational displays, assisting with mailings, coordinating Caring for Communities events and native plant sales, maintaining D/E/W property, monitoring easements and much more.

Conservancy News & Notes

John Snook is New Vice-President

Roy Fontaine has stepped down as the Conservancy's vice-president (Thank you, Roy!). He has been replaced by long-time board member (and one-time president) **John Snook**. John will assume the presidency in May of 2012.



New Board Member Profile: Deb Brubaker



*Deb Brubaker and Conservancy President
Wayne McDuffett*

The Linn Conservancy has named Deb Brubaker of Lewisburg to its Board of Directors. Deb moved to the area 19 years ago after graduating from Goldey-Beacom College in Wilmington, DE with a degree in Business Administration. Deb, who was elected to a three-year term, works with her husband, Maurice Brubaker at Robert M. Brubaker accounting firm. They also own and operate *What's In Store*, a designer discount clothing venture in downtown Lewisburg.

"I believe that each of us has a responsibility to the environment," Deb says. "We are so blessed in this area to have such beautiful outdoor scenery and I want to do my part to protect and preserve those spaces. I enjoy serving the community and this

opportunity will allow me to share specific talents that will benefit this worthy and passionate organization," she adds.

We look forward to having Deb working with us on the board of directors.



Kids' Corner

Activity 1: Ice Candles

Materials needed:

- Small plastic tub or bucket (a summer beach pail is the ideal size).
- Tin can or small plastic cup.

A few strategically placed ice candles can turn your backyard into a winter's evening wonderland. Ice candles are easy to make, and best of all, cost next to nothing.



The trick

The first step to create an ice candle is to make a mold. This is done by filling a bucket or pail with cold tap water and placing a tin can or cup in the center. Weigh it down with enough small rocks to almost, but not quite, sink it.

Place the bucket outside on the porch or in the freezer until the water is frozen solid. Carefully remove the block of ice from the pail or bucket (you might need to loosen the ice by running warm tap water over the bucket's surface for a few moments). Once the ice is free from the bucket, the next step is to remove the tin can or plastic cup from the center of the block. (If the can or cup seems locked in the ice you can fill it with warm water to make removal easier.)

Once the ice has been removed from the pail and the cup from the center of the block, you've got your basic ice candle. Just place a small candle at the bottom of the well where the cup used to be. Bingo! You've just made an ice candle!



Hints

To keep the can or cup from "drifting off center" you may want to anchor it in place by placing a stick across the top of the pail and taping the cup or can to the stick. An inverted saucepan cover will also do the trick -- the knob at the top will prevent the cup or can from drifting too far from the center.

Rainbow ice candles

Essentially you follow the steps outlined above, except you will build your candle in stages. Fill your bucket with 1/2 inch cold tap water and let freeze. When your first layer has frozen solid, add another 1/2 inch of VERY COLD tap water and add several drops of food coloring. Freeze and repeat the process with a different food coloring for each layer. Don't forget to put a can or cup in the center to make space for your candle.

Activity 2: Terrific Twig Vase

On your next nature walk take time to collect some twigs for this activity. In an afternoon your kids can turn an old empty jar into a beautiful vase!



Materials Needed: Twigs, rubber bands, an empty jar, twine or ribbon, glue

What to do:

Step One: While on a nature hike or playing in your backyard, gather a bunch of long, straight twigs.

Step Two: Break your twigs so that they are an inch longer than the height of the jar.

Step Three: Wrap a rubber band around the neck of jar, about an inch from the top.

Step Four: Wrap another band around the jar, an inch from the bottom.

Step Five: Place the twigs around the jar, tucking the ends under both rubber bands. Space them as closely as possible.

Step Six: When the jar is covered with twigs, slide the rubber bands toward each other, so that they meet in the middle of the jar.

Step Seven: Take a few pieces of twine or ribbon and wrap them around the rubber bands.

Step Eight: To finish the vase off, you can either make a bow with the ribbon, or simply glue the ends in place.



Welcome to Our New Members

We welcome these new members and thank them for their support of the Conservancy's mission.

David Staebler, New Columbia; **Dr. Brad Miller** and **Dr. Cheryl Stayton**, Northumberland; **Deb and Maurice Brubaker**, Nancy and **Dick Dagle**, Lewisburg; **Pennsylvania Power & Light**



Thank You!

Linn Log mailing: **Dave and Vicki Heberlig**, **Joe Keller**, **Geoff Goodenow**

Adopt a Highway: **Joe Reilly**, Bucknell incoming students

Membership Mailing: **DeeJee Keen**, **Susan Warner-Mills**, **David Goehring**, **Anni Longenbach**, **Geoff Goodenow**

D/E/W Fall Cleanup: Bucknell's **Chi Phi** and **Theta Chi** fraternities, about 24 BU students in total; **Bill Bastian**, **David Goehring**, **Bill Deitrick**; **Jeannette Lasansky**; **Geoff Goodenow**; **Tom Rich**; snacks for the event provided by **William and Jeannette Lasansky**.

Trailhead Fence: **Zach Bohartz** for building a new fence at Dale's Ridge trailhead parking area;

Web Services: Design Studio & **Conor Quinlan** for special consideration for web related-services;

DRT Stewards: The following people are Dale's Ridge Trail stewards, or have assisted with trail work in 2011: **Bob Rapp**, **Brent Kline**, **Amanda Kline**, **Harry Huff**, **John Murphy**, **Tom Travis**, **Allan Grundstrom**, **Ann Grundstrom**, **Allen Schweinsburg**, **John Capwell**, **Pete Macky**, **Tom Duck**, **Jim Swan**, and **Carl Oberheim**. Thanks to all for keeping this well-used trail in great shape throughout the year.

Advice Regarding Trail Issues: Attorney **Terry Light**

Joe Southerton, developer of the Koons Trail in Mifflinburg and author of its descriptive trail guide, has decided to step aside from some of his voluntary work with the Conservancy. Joe has served as our chief steward and monitor for the Koons property easement along North Fourth Street north and south of the Hassenplug Covered Bridge since the establishment of the protective conservation agreement in the early 1990s. He has also served on the Conservancy's Site/Stewardship committee. While taking leave of these duties, Joe will continue to help us out with his popular "owl prowls" during the annual Caring for Communities events each April. All who have joined Joe on these outings in the past will be glad to know that his informative and entertaining "prowls" will still be happening to be enjoyed this spring. We thank Joe for his many years of service to the Merrill Linn Conservancy and look forward to many more.

Membership-Development Committee Report, by Susan Warner-Mills

Committee Goals for 2011: Members of the Linn Conservancy Membership-Development Committee are pleased to report that we have met the goals we set for ourselves for 2011:

We experienced significant success in our efforts to coordinate personal outreach to new members and late renewers; we designed and implemented our Business Partner Card project; we are thrilled that **Carol Crichley** agreed to serve as the Conservancy's new Coordinator of Volunteer Services. With her help, we are putting in place a solid volunteer recruitment and coordination function.

In addition to the above, thanks to the leadership and creativity of our faithful coordinator **Geoff Goodenow**, we have initiated an effort to reach out to local attorneys, estate planners and others asking them to keep the Linn Conservancy in mind when discussing issues of land preservation with their clients.

Committee Goals for 2012:

- Coordinate personal outreach and follow up to new members and late renewers as in 2011.
- Evaluate success of member benefits initiatives, especially the Business Partner Card; if successful, continue program in 2013.
- Continue outreach to estate planning professionals, specifically contacting financial planners (independents, at banks, at insurance agencies), accountants, and realtors.
- Continue and reinforce volunteer recruitment and placement processes established with new Volunteer Services Coordinator in 2011.
- Support the Caring for Communities program through a new initiative to secure financial underwriting for as many specific CFC events and programs as possible.
- Support the Annual Meeting planning process as needed.
- Consider new possibilities for future membership and fundraising projects and events.

Please consider joining our committee in 2012 to help us with these exciting efforts! Contact Susan Warner-Mills at swm@dejazzd.com or 716-0870.

Your 2012 Membership Support

In November, members received our request for your continuing support of the Linn Conservancy's mission for 2012. Thanks to all who have already responded to that mailing. Your prompt response is most appreciated. For those who need it, a membership form is included in this newsletter or you can go to our website (below) and join, renew, or contribute there. You may also indicate your support for the Buffalo Creek Watershed Alliance (BCWA) of the Merrill Linn Conservancy on this form. If you don't need the form, share it with a friend or neighbor!

Our Business Partner Card

We thank local businesses (**Vargo Outdoors**, **Canoe Susquehanna**, **Cherry Alley Café**, **Ard's Farm Market**, **Lewisburg Studio**, **Son's Power** all in Lewisburg; **Reptiland**, Allenwood; **Emma's Food for Life**, Selinsgrove), that joined us in supporting our *Business Partner* card, which was enclosed in your membership letter. Please patronize these businesses and thank them for their support of the Conservancy's mission. This effort was spearheaded by our Membership/Development Committee. We thank volunteer Roger Curran for his work with the **Printed Page** on the design and production of the card. We welcome any comments you might have about this member benefit.



Moving?

PLEASE NOTIFY US of any change of your address, email or phone. The post office charges us for returned and forwarded mail!

We continue to encourage all members to keep in touch with our activities, and to encourage their friends to do so, by frequently visiting our website (www.linnconservancy.org), which features photos and information as well as the opportunity to join, renew and donate online.

Contributions and Donations Received

We thank the following individuals and corporation for special unrestricted donations in support of the Linn Conservancy: **Mary and Douglas Candland, Janet Mathias, and PPL (Pennsylvania Power & Light).**

These Life Members* made additional contributions for 2012: **Owen Anderson; R. Jeffrey and Cindy Coup; Geoff Goodenow; William and Jeannette Lasansky; Peter and Nancy Macky; Ed and Mary Mastascusa; Wayne McDiffett; Carl Oberheim; Elsbeth and Richard Steffensen**

* (Note: The life membership classification was dropped many years ago, but is still recognized for those who joined as such early in the Conservancy's history)



MEMBERSHIP FORM

YES! I/we want to join the Linn Conservancy this year as a:

_____	Benefactor	\$5,000	_____	Contributor	\$100
_____	Patron	\$1,000	_____	Business	\$50
_____	Steward	\$500	_____	Family	\$50
_____	Sponsor	\$250	_____	Individual	\$25

new membership renewal add \$10 for Buffalo Creek Watershed Alliance membership

Name(s) _____

Address _____

City _____ State _____ Zip _____

Phone (h) _____ (work) _____ email _____

TOTAL AMOUNT ENCLOSED _____

Please make checks payable to the **Linn Conservancy**
Send to: P.O. Box 501, Lewisburg, PA 17837
Or go to our website (www.linnconservancy.org) and join or contribute there.

The Merrill W. Linn Land & Waterways Conservancy is a nonprofit 501(c)(3) organization, with contributions tax-deductible to the extent allowed by law. All monies are spent on local projects.

PDF Available for Your Next Linn Log

As you know, the *Linn Log* comes to you three times a year. Many of our members have requested to receive this newsletter electronically. We encourage others of you who would like to receive it in pdf format to request being added to that list.

What happens to your hard copy??? If you do receive a hard copy, consider passing it on to friends, neighbors, and new folks to the area when you finish with it. Help us increase our membership support by sharing the newsletter to spread the word about the mission and successes of the Conservancy. Thank you.

www.linnconservancy.org

The Merrill W. Linn
Land & Waterways
Conservancy
P.O. Box 501
Lewisburg, PA 17837
www.linnconservancy.org

Address Service Requested

Non Profit
U.S. Postage
PAID
Lewisburg, PA
Permit No. 64



This issue: New Youth Photo Contest and more . . .
